

Syntron® vibra drive units

Syntron® Vibra Drive Units provide directional vibratory conveying movement to a track, trough or any responsive surface. They are designed for use with packaging machines or special process equipment requiring a metered flow of bulk materials or parts.

Vibra drive units are small, compact, electromagnetic drives encased in dust-tight housings. The mounting bracket has pre-drilled holes for easy attachment to the mass to be vibrated. Drive type and number of drives is determined by the width, length and the weight of the mass to be vibrated.

Below-deck, base mounting is standard for all units. Controls are available to operate a single-drive unit or multiple-drive configurations.

Vibra Drive Units operate from either 115 or 230 volt, single- phase, 50 or 60 cycle power. Models BF-2, BF-3, BF-4 and BF-4 LF vibra drive units also operate from 460 volt; all other units require a step-down transformer when operating voltage is 460 volt.

Syntron Vibra Drives are designed for easy adjustment, including external tuning on most models.



Syntron vibra drives are used by many different industries. Here, an F-T01 drive in a parts handling application.



Custom designed sandwiching processes rely on Syntron drives to ensure consistent, controlled delivery and smooth, gentle cookie, wafer or cracker handling.

Syntron vibra drive units are isolated from the surrounding building and supports by rubber mountings for most models. Three types of rubber mountings are available. The BF-4 drive features sandwich mounts. The F-T02, BF-4 LF and the Velocity® RS drives feature coil springs.

Available Rubber Mountings

Dimensions in inches

	No. 1 Standard Cushion		No. 2 Sandwich Type		No. 3 Special Double Stud		
	A	B	A	B	A	B	C
F-T0	1	11/16	1	3/4	1	3/4	3/4
F-T01	1	1/4	1	5/16	1	5/16	3/4
F-010	1	3/16	1	1/4	1	1/4	3/4
F-T02 ■	1 1/4	5/16	1 1/4	9/16	1 1/4	5/16	3/4
HV-10	1 1/4	3/4	1 1/4	1	1 1/4	3/4	3/4
BF-01	1	11/16	1	3/4	1	3/4	3/4
BF-2	1 1/4	3/4	1 1/4	1	1 1/4	3/4	3/4
BF-3*	1 9/16	17/32	1 9/16	17/32	1 9/16	17/32	5/8

Standard rubber mounts are solid rubber (no metal inserts or studs on bottom).

■ F-T02 comes standard with coil spring mounts. Dimension A = 1¹⁵/₆₄; Dimension B = 1¹/₁₆.

* All BF-3 Isolators are 5/16-18 thread.

F-Series Vibra Drives

Syntron® Vibra Drives are designed for easy adjustment, including external tuning on most models.



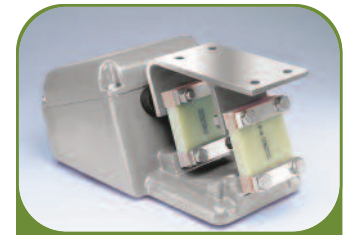
Model F-T0 will handle up to a 3½-pound mass with up to .060 stroke.



Model F-T01 will handle up to a 7 pound mass with up to .060 stroke.



Model F-T02 will handle up to a 9 pound mass with up to .090 stroke.



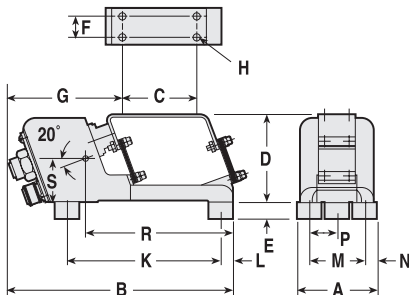
Model F-010 will handle up to a 13 pound mass with up to .060 stroke.

Drive Dimensions (inches, mm)

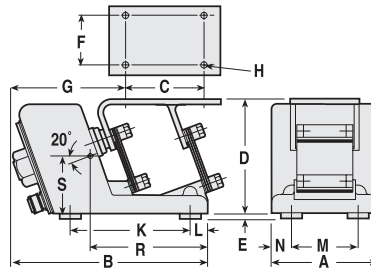
Model		A	B	C	D	E •	F	G	H	J	K	L	M ▲	N	P	R ■	S ■	T
F-T0	(in)	3¼	8¾	3	3 9/16	11/16	1	4¼	7/32 dia	-	6¼	½	2¼	½	1 1/8	5½	1 7/16	-
	(mm)	82.6	222.3	76.2	90.5	17.5	25.4	107.9	5.6	-	158.8	12.7	57.2	12.7	28.6	139.7	36.5	-
F-T01	(in)	5	9 1/8	3¾	5 3/8	¾	1¾	5¼	11/32 dia	-	5 5/8	13/16	3 1/8	15/16	-	5½	2½	-
	(mm)	127	231.8	95.3	136.5	6.4	44.5	133.4	8.7	-	142.9	20.6	79.4	23.8	-	139.7	63.5	-
F-T0-2	(in)	5	10 7/8	3¾	5 3/8	1 1/16	1¾	6 21/32	11/32 dia	-	5 5/8	13/16	3 1/8	15/16	-	5 11/16	2½	-
	(mm)	127	276.2	95.3	136.5	27	44.5	169.1	8.7	-	142.9	20.6	79.4	23.8	-	144.5	63.5	-
F-010	(in)	6	10 7/8	3¾	5 9/16	3/16	1¾	7 1/8	11/32 dia	¾	7 3/4	1	3 1/8	1 7/16	-	6 3/8	2 5/16	-
	(mm)	152.4	276.2	95.3	141.3	4.76	44.5	181	8.7	19	197	25.4	79.4	36.5	-	161.9	58.7	-

- Height E depends upon rubber mounting selected. See Available Rubber Mountings chart on page 16.
- ▲ Model F-T0 has two 1-inch dia. rubber feet on the rear and one on front. Models F-T01, F-010, BF-01 and BF-2 have two feet on the rear and two on front. Models F-T02, BF-4-LF and Velocity® RS drives feature coil spring isolators as standard components.
- Center of mass—this point should coincide with the center of trough mass at a 20° working angle.

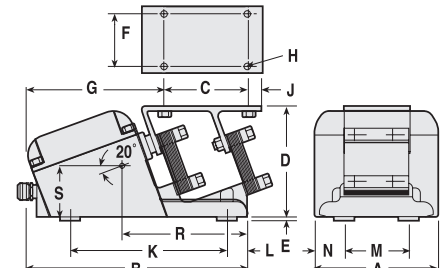
Model F-T0



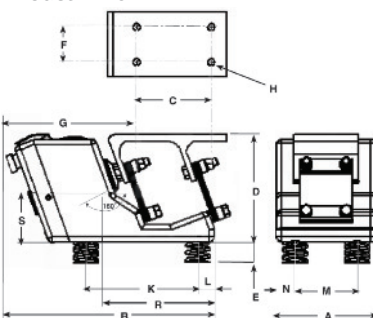
Model F-T01



Model F-010



Model F-T02



Specifications

	F-T0	F-T01	F-T02	F-010
Approx. Power Consumption*	15 Watts	20 Watts	30 Watts	50 Watts
Approx. Current Input*	.35 amps	.9 amps	1.5 amps	2.0 amps
Approx. Net Weight, Drive	9 ½ lb	21 lb	33 lb	33 ½ lb

* Unit can be ordered to operate from virtually any commercial power supply up to 230 volts. A stepdown transformer is required when operating voltage is 460 volts. Please specify the voltage required and either 50 or 60 Hz at time of order.

